

**Training,
Placement,
and
IT Support Expert**

OUR SERVICES

ABOUT OUR COMPANY



Training and Development

Get online and offline courses from the world's Leading experts.



Technical Support

Provides Outsourced and Technical Support, Remote Support.



Client Management

Service Provider of International Business Consultant Services.



Everyday
From 07AM - 12 PM

Learn

From Certified

Microsoft Azure Administrator Training Job in 50 days assured

Take a Free Demo
Class

The quality of our classes is pristine and excellent for the students and companies too who want their employees to be updated with the advanced programming systems. Rexton IT Solutions is the only place where you can get the courses in your budget and flexibly designed for the trainees.



www.rextonitsolutions.com



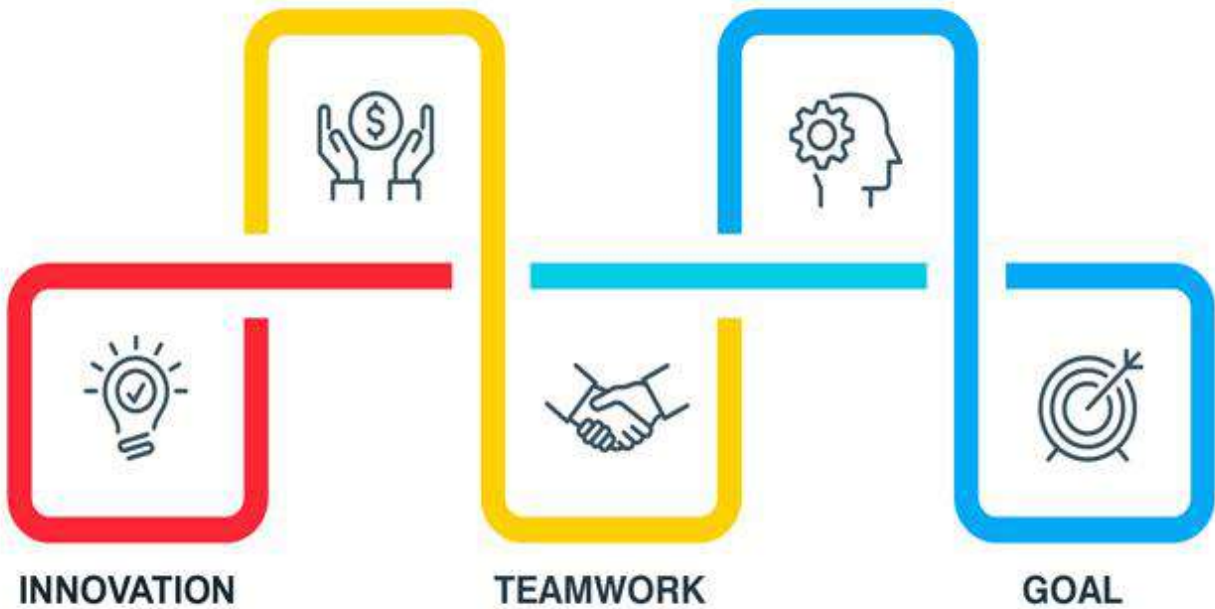
Team Work and Strategy

Good Team , Best Results



CAREER

STRATEGY



1 1 to 1 TRAINING

4 INTERVIEW PREPARATION

2 CERTIFY TRAINERS

5 CERTIFICATION GURANTEE

3 LIVE PROJECT

6 PLACEMENT GURANTEE

MICROSOFT AZURE TRAINING MODULE

Microsoft Azure Administrator - 104

LIVE PROJECT TRAINING

Audience Profile

Candidates for this exam should have subject matter expertise implementing, managing, and monitoring an organization's Microsoft Azure environment.

Responsibilities for an Azure Administrator include implementing, managing, and monitoring identity, governance, storage, compute, and virtual networks in a cloud environment, plus provision, size, monitor, and adjust resources, when needed.

An Azure Administrator often serves as part of a larger team dedicated to implementing your organization's cloud infrastructure.

A candidate for this exam should have at least six months of hands-on experience administering Azure, along with a strong understanding of core Azure services, Azure workloads, security, and governance. In addition, this role should have experience using PowerShell, Azure CLI, Azure portal, and Azure Resource Manager templates.

CourseManage Azure identities and governance

•Manage Azure AD objects

- create users and groups
- manage user and group properties
- manage device settings
- perform bulk user updates
- manage guest accounts

- configure Azure AD Join
- configure self-service password reset

•Manage role-based access control (RBAC)

- create a custom role
- provide access to Azure resources by assigning roles
- subscriptions
- resource groups
- resources (VM, disk, etc.)
- interpret access assignments
- manage multiple directories

•Manage subscriptions and governance

- configure Azure policies
- configure resource locks
- apply tags
- create and manage resource groups
- move resources
- remove RGs
- manage subscriptions
- configure Cost Management
- configure management group

•Manage storage and storage accounts

- configure network access to storage accounts
- create and configure storage accounts
- generate shared access signature
- manage access keys

- implement Azure storage replication
- configure Azure AD Authentication for a storage account

•Manage data in Azure Storage

- export from Azure job
- import into Azure job
- install and use Azure Storage Explorer
- copy data by using AZCopy

•Configure Azure files and Azure blob storage create an Azure

- create and configure Azure File Sync service
- configure Azure blob storage
- configure storage tiers for Azure blobs

•Deploy and manage Azure compute resources

•Configure VMs for high availability and scalability

- configure high availability
- deploy and configure scale sets

•Automate deployment and configuration of VM

- modify Azure Resource Manager (ARM) template
- configure VHD template
- deploy from template
- save a deployment as an ARM template
- automate configuration management by using custom script extensions

•Create and configure VMs

- configure Azure Disk Encryption
- move VMs from one resource group to another
- manage VM sizes
- add data discs
- configure networking
- redeploy VMs

•Create and configure containers

- create and configure Azure Kubernetes Service (AKS)
- create and configure Azure Container Instances (ACI)
- NOT: selecting a container solution architecture or product; container registry settings

•Create and configure Web App

- create and configure App Service
- create and configure App Service Plans
- NOT: Azure Functions; Logic Apps; Event Grid

•Configure and manage virtual networking

- Implement and manage virtual networking
- create and configure VNET peering
- configure private and public IP addresses, network routes, network interface, subnets, and virtual network

•Configure name resolution

- configure Azure DNS

- configure custom DNS settings
- configure a private or public DNS zone

•Secure access to virtual networks

- create security rules
- associate an NSG to a subnet or network interface
- evaluate effective security rules
- deploy and configure Azure Firewall
- deploy and configure Azure Bastion Service
- NOT: Implement Application Security Groups; DDoS

•Configure load balancing

- configure Application Gateway
- configure an internal load balancer
- configure load balancing rules
- configure a public load balancer
- troubleshoot load balancing
- NOT: Traffic Manager and FrontDoor and PrivateLink

•Monitor and troubleshoot virtual networking

- monitor on-premises connectivity
- use Network Performance Monitor
- use Network Watcher
- troubleshoot external networking
- troubleshoot virtual network connectivity

•Integrate an on-premises network with an Azure virtual network

- create and configure Azure VPN Gateway
- create and configure VPNs
- configure ExpressRoute
- configure Azure Virtual WAN

•Monitor and back up Azure resources

•Monitor resources by using Azure Monitor

- configure and interpret metrics
- analyze metrics across subscriptions
- configure Log Analytics
- implement a Log Analytics workspace
- configure diagnostic settings
- query and analyze logs
- create a query
- save a query to the dashboard
- interpret graphs
- set up alerts and actions
- create and test alerts
- create action groups
- view alerts in Azure Monitor
- analyze alerts across subscriptions
- configure Application Insights
- NOT: Network monitoring

•Implement backup and recovery

- configure and review backup reports

- perform backup and restore operations by using Azure Backup Service
- create a Recovery Services Vault
- use soft delete to recover Azure VMs
- create and configure backup policy
- perform site-to-site recovery by using Azure Site Recovery

Clients Feedback and Customer Satisfaction



Client's Feedback



16-LPA



I found the right guide in form of Rexton IT Solutions to attain my goal. They allow me to scale my capability and it feels great to know that you are ready to solve all the IT solutions with ease. I

Gaurav
Administrator

Client's Feedback



11-LPA



I was looking for a course that can pump my career and help me in getting the highest position in a company on the basis of skills I possess. I came across Rexton IT Solutions and immediately joined it. The positive vibes I got from the trainers motivated me to achieve something in my professional life.

Amit
Network Administrator

xx
xx

9-LPA



Rexton IT Solutions offer the best training, paper modules and testing. This helped me get a job in a well-recognized organization. I appreciate and thank them to make everything simple for me.

Pooja
Network Engineer



Client's Feedback

xx
xx

11.5-LPA



I am happy to get the opportunity to talk about the Rexton IT Solutions. My honest views regarding the training center are that no one offers such kind of environment. The trainers are well-versed with the courses and update the students with latest technologies time-to-time.

Mirdul
System Admin



Client's Feedback

Contact us!

Rexton IT Solutions Pvt. Ltd.

C-28, Sector-2 Noida, 201301

PH- 01204117766 / 9999051150

Email:- contact@rextonitsolutions.com

Web:- www.rextonitsolutions.com



Thank You